



# Vaporiser

AG1YX

- For injection of liquids, liquefied gases and gas samples
- Eliminates discrimination by vaporising the full sample
- High operator safety
- Expands capabilities of existing analysers

*Get ready for tomorrow's analytics*

# Vaporiser - AG1YX

The Gas Vaporiser provides a reliable method for converting liquid and liquefied samples into gas, ensuring seamless injection via a gas sampling valve.

## Principle of operation

The GAS Vaporiser is designed to evaporate liquid and liquefied samples, enabling their introduction in the gas phase via a Gas Sampling Valve (GSV). Complete and reproducible vaporisation is achieved by means of an integrated heated pressure regulator, which ensures full evaporation of the sample and maintains a stable, constant outlet pressure of the resulting gas stream. A schematic overview of the system is shown in Figure 2. The vaporiser incorporates a selection valve that allows the user to switch between a gas or liquid sample inlet. Two pressure gauges, for inlet and outlet pressure monitoring, are available as optional features. The vaporiser is equipped as standard with a 1/4" NPT inlet connection. This inlet can optionally be fitted with a user-selected quick-connect coupling (see Figure 2). For the analysis of trace impurities in LPG, the GAS Vaporiser is suitable for compounds with boiling points up to approximately C<sub>5</sub>/C<sub>6</sub>. For higher-boiling components, the use of the Sample Securitiser is recommended. Further details are provided in the corresponding application note. The vaporiser is available as an external unit or integrated into the GC analyser valve oven. ATEX-certified versions are available, and pressure gauges can be supplied as optional accessories. Refer to the ordering information below.

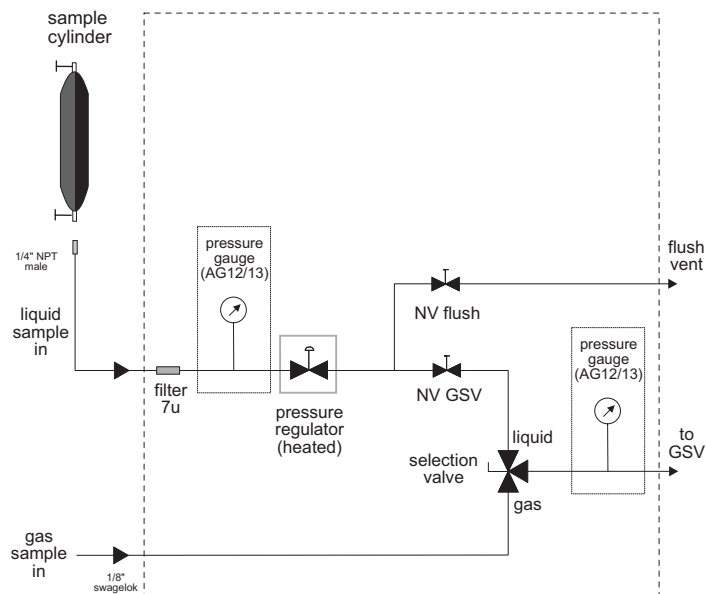


Figure 1 Diagram Vaporiser (gauges optional)

## Specification

Maximum inlet pressure:	50 bar, higher pressure on request
Outlet pressure:	0-6 bar
Maximum output flow:	500 ml/min
Maximum temperature:	190 °C
Safety:	EMC (2004/108/EC), ATEX (94/9/EC and 99/92/EC), PED (97/23/EC), Low Voltage (2006/95/EC).
Power supply:	230 V or 115 V AC, 50W
Connections (input):	Gas: 1/8" Swagelok (others on request) Liquid (cylinder connection): 1/4" NPT male standard, can be extended with various quick connects on request
Connection (output):	1/8" Swagelok, others on request.
Application range	up to C <sub>6</sub>



Figure 2 Vaporiser, basic version

Ordering information AG1YX		
AG10X	Vaporiser Basic version	
AG11X	Vaporiser ATEX version	
AG12X	Vaporiser Basic with inlet and outlet Pressure Gauges	
AG13X	Vaporiser ATEX with inlet and outlet Pressure Gauges	
AG14X	Vaporiser Basic in the Trace valve oven box	
X	X=1: 230V AC	X=2: 115V AC

## About GAS

Global Analyser Solutions provides GC & GC-MS solutions for Energy, Refinery, Chemical and Environmental markets. Our analysers address a broad spectrum of measuring requirements with high precision and reliability. Please reach out for more information on our website. [www.gassite.com](http://www.gassite.com)