



LPG analyser with vaporiser

PG500 | PG525



- For liquids, liquefied gases and gas samples
- Assures sample integrity
- High operator safety, highest accuracy and precision
- ASTM D2163, D2712, D4424, D5303, D5504, D6159, D6228, D7423, IP 264/72, ISO 7941, UOP 960

Get ready for tomorrow's analytics

LPG analyser with vaporiser

The GAS LPG analyser is the customised solution for determination of composition and impurities in liquefied petroleum gases and hydrocarbon mixtures.

Principle of operation

Figure 1 illustrates the operating principle of the LPG analyser. The liquid sample is first vaporised using a heated vaporiser, after which a gas sampling valve (GSV) injects the gaseous sample onto the separation column. Detection is performed using a flame ionisation detector (FID). This configuration ensures complete sample evaporation and accurate analysis of components up to C₅. For higher-boiling components, an LPG analyser equipped with a sample securitiser is recommended (Analyser PG510). The vaporiser unit is equipped with a secondary inlet, enabling the analysis of gas samples directly, bypassing the vaporiser.

Specification

- Thermo Trace GC1600 or GAS CompactGC^{4.0} with one diaphragm gas injection valve (rotary valve is optional) and Flame Ionisation Detector (FID)
- Heated vaporiser
- capillary column
- Chromeleon chromatography data system
- Runtime 16 minutes, depending on sample and separation
- Minimum detectability: 1 ppm
- Repeatability: < 1 %

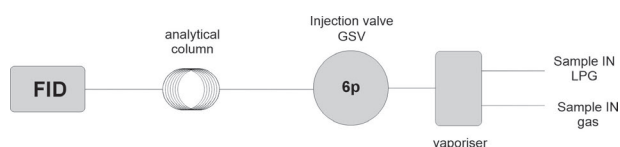


Figure 1 LPG analyser using GSV and vaporiser

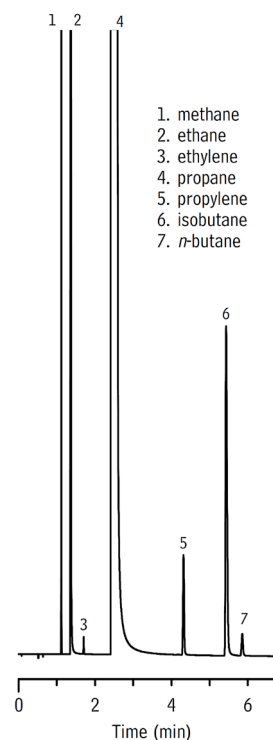


Figure 2 Impurities in Propane.

Results

Figure 2 shows an example chromatogram of the LPG analyser equipped with vaporiser and GSV.



Figure 3 The GAS LPG analyser is available on Trace GC 1600 and CompactGC^{4.0}

Ordering information	PG50X - ABCDE LPG analyser based on Trace GC 1600			
	PG525 - ABCDE LPG analyser based on CompactGC ^{4.0}			
code X	0	1	2	3

For selecting options ABCDE (e.g. valve type and passivation, pump and vacuum sampling, rotameter and sample connections, pressure and moisture sensors, hydrogen sensor for safety shut-off, power plug type and more), [see the options table in the order guide.](#)

About GAS

Global Analyser Solutions provides GC & GC-MS solutions for Energy, Refinery, Chemical and Environmental markets. Our analysers address a broad spectrum of measuring requirements with high precision and reliability. Please reach out for more information on our website. www.gassite.com