



## LPG analyser with vaporiser

PG500 | PG525



- For liquids, liquefied gases and gas samples
- Assures sample integrity
- High operator safety, highest accuracy and precision
- ASTM D2163, D2712, D4424, D5303, D5504, D6159, D6228, D7423, IP 264/72, ISO 7941, UOP 960

*Get ready for tomorrow's analytics*

## LPG analyser with vaporiser

The GAS LPG analyser is the customised solution for determination of composition and impurities in liquefied petroleum gases and hydrocarbon mixtures.

### Principle of operation

Figure 1 illustrates the operating principle of the LPG analyser. The liquid sample is first vaporised using a heated vaporiser, after which a gas sampling valve (GSV) injects the gaseous sample onto the separation column. Detection is performed using a flame ionisation detector (FID). This configuration ensures complete sample evaporation and accurate analysis of components up to C<sub>5</sub>/C<sub>6</sub>. For higher-boiling components, an LPG analyser equipped with a sample securitiser is recommended (Analyser PG510). The vaporiser unit is equipped with a secondary inlet, enabling the analysis of gas samples directly, bypassing the vaporiser.

### Specification

- Thermo Trace GC1600 or GAS CompactGC<sup>4.0</sup> with one diaphragm gas injection valve (rotary valve is optional) and Flame Ionisation Detector (FID)
- GAS Vaporiser
- Capillary column
- Chromeleon chromatography data system
- Quantitative evaporation up to C<sub>5</sub>/C<sub>6</sub>. For higher boiling components a liquid sampling valve (LSV) + Sample Securitiser is advised.
- Minimum detectability: 1 ppm
- Repeatability: < 1 %

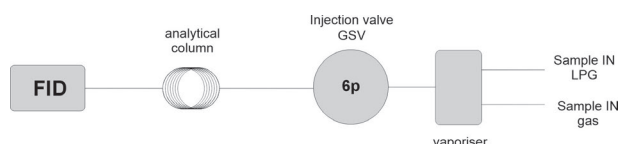


Figure 1 LPG analyser using GSV and vaporiser

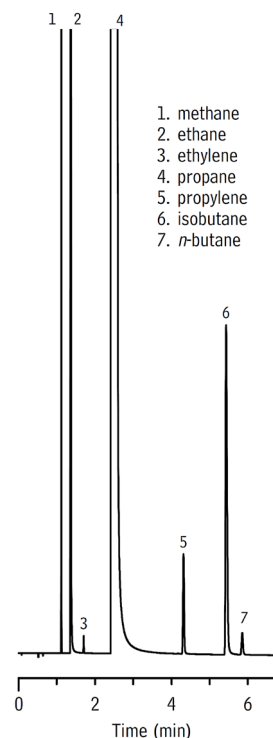


Figure 2 Impurities in Propane.

### Results

Figure 2 shows an example chromatogram of the LPG analyser equipped with vaporiser and GSV.



Figure 3 The GAS LPG analyser is available on Trace GC 1600 and CompactGC<sup>4.0</sup>

Ordering information	PG50X - ABCDE LPG analyser based on Trace GC 1600			
	PG525 - ABCDE LPG analyser based on CompactGC <sup>4.0</sup>			
code X	0	1	2	3

For selecting options ABCDE (e.g. valve type and passivation, pump and vacuum sampling, rotameter and sample connections, pressure and moisture sensors, hydrogen sensor for safety shut-off, power plug type and more), [see the options table in the order guide.](#)

### About GAS

Global Analyser Solutions provides GC & GC-MS solutions for Energy, Refinery, Chemical and Environmental markets. Our analysers address a broad spectrum of measuring requirements with high precision and reliability. Please reach out for more information on our website. [www.gassite.com](http://www.gassite.com)